



Fairy on the Moon Tutorial



Create a beautiful mythical fairy with CPI mold DT44 in a number of different ways!

Materials

- [DT44 Fairy Moon Mold](#)
- [GM125 LG Round Slump](#)
- Suitable Glass Separator such as ZYP
- COE96 Sheet Glass and frit was used in this tutorial.
- Glass cutting tools
- 20 Gauge Bare Copper Wire



Always wear a mask when spraying your mold with glass separator and when working with F1 Powder Frits. This mold needs to be raised on kiln shelf posts in the kiln.

Art Glass Supplies
Create Inspire Fuse

Fairy with Clear Irid



Treat your mold thoroughly with a suitable glass separator before every use. Gently sweep away any left over ZYP residue after every firing before applying a new coat.

Cut a 11.25" dia circle out of COE90 Clear Irid sheet glass. Place glass on texture, Irid side up. Elevate the mold on kiln posts. Because this is one layer of glass it requires a schedule with less heat. See our suggested schedule in Table 2.

You can slump your Fairy texture into a bowl. We used GM125 and slumped using the schedule in Table 3.

Fairy Sun Catcher



Treat your mold thoroughly with a suitable glass separator. Put some F2 Fine Pale Purple, Light Purple and Deep Purple into the tips of the wings and body of wings.



This fairy done with frit looks stunning when the sun shines through her!



Sprinkle F2 Fine Pale Blue and Light Blue into the sky and onto the Fairy to add some depth her dress and hair.



Cut a 11.25" dia circle of White Irid sheet glass and a 11.25" dia of Clear sheet glass.



Place the White Irid circle first onto the mold Irid Side down followed by the clear. Optional: Place a piece of Bare 20 gauge-copper wire inbetween the two sheets of glass so that you can hang the glass when it is fired.



Place the mold on kiln shelf posts. Full fuse the glass on the mold using your favorite full fuse or our suggested Full Fuse schedule in Table 1.



Fairy Ring Border

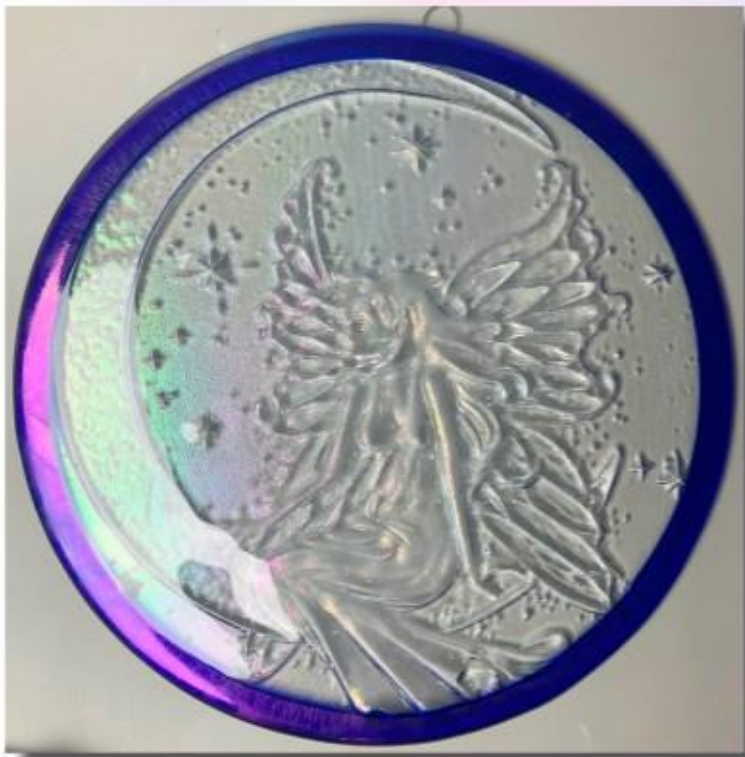


Cut a 11.25" dia circle out of Clear sheets glass, and 9/75" dia out of Clear sheet glass.

To make the border you will need to cut a 3/4" thick x 11.25" dia circle out of Transparent Cobalt Blue Irid sheet glass. For more info on cutting circle borders out of sheetglass check out this [tutorial here.](#)

Place the mold in the kiln on shelf posts as pictured. Place the Clear Iridglass down irid side down on the mold first. Then fit the Clear, inside the Blue Irid border, the blue irid border should be irid side up on the mold. Place that ontop of the clear glass on the mold.

Full fuse the glass on the mold using your favorite full fuse or our suggested scedule in table 1.



PSA: Irid is hard to photograph!

Above is a 11.5" dia circle of Purple full fused. There are so many ways to create with this mold. We can't wait to see what you do! Please share your creations in our fused glass group: [Fusers of CPI](#)

Table 1- Full Fuse

Segment	Rate	Temp	Hold
1	275	1150	45
2	50	1330	30
3	350	1465	10
4	9999	950	60
5	100	800	10

Table 2~ Fuse

Segment	Rate	Temp	Hold
1	275	1150	30
2	50	1330	30
3	350	1420	10
4	9999	950	60
5	100	800	10

Table 3~ Slump

Segment	Rate	Temp	Hold
1	275	1250	20
2	9999	950	60
3	100	800	10

For more tutorials and molds check out our website!

www.creativeparadiseglass.com

If you have not already, join our Facebook group for live videos and exciting news all on Creative Paradise, Inc molds!

[FB group: Fusers of CPI](#)

