

Lady of the Woods

Materials:

- DT32 Lady of the Woods
- GM132 XL Sushi (Optional)
- COE96 Glass (See Right)
- Suitable Glass Separator/ZYP
- Frit Placement Tools
- Kiln Shelf Posts

- **F1 Powder Frits:**
 - Bronze
 - Teal Green
 - Pale Purple
- **F2 Fine Frits:**
 - Hunter Green
 - Medium Amber
 - Olive Green
 - Pale Purple
- **Sheet Glass:**
 - 12" x 12" Sour Apple
 - 12" x 12" Standard Clear

OR

 - 12" x 12" Ming Green
 - 12" x 12" Clear Irid

This mythical beauty comes to life with the use of powdered and fine frits to enhance her intricate details.

Begin by treating the mold thoroughly with glass separator, making sure to get all the angles. We recommend spray-on ZYP. Always wear a mask when using spray-on separators and/or powder frits.



Image 1



Sift F1 Bronze around the edges of the face and lightly in the facial features themselves.



Add F1 Teal Green along the veins of each leaf and around the leaf edges.



To get the frit into the leaf veins you can gently use your finger to push it. Take care not to remove any separator.



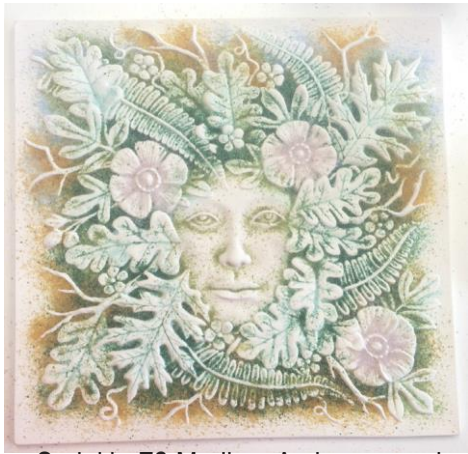
Place F1 Pale Purple into the deep areas of the flowers.



Sprinkle F2 Hunter Green into the shadowed areas between the leaves and flowers near the face.



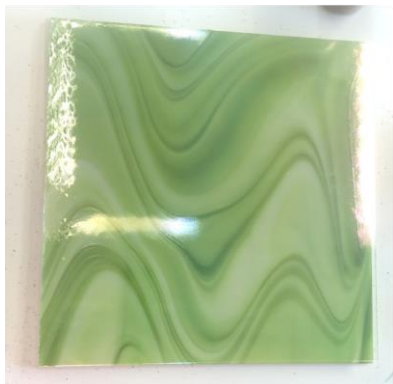
Add F2 Olive Green into the areas between the leaves and flowers just outside the Hunter Green and blend together. Add an additional light sprinkling of F2 Olive Green into the facial features.



Sprinkle F2 Medium Amber around each twig and tendril and add more F2 Hunter Green under the foliage at the bottom edge of the scene.



Add F2 Pale Blue into some of the "sky" areas along the top of the scene and place some F2 Pale Purple into the flowers.



To create an opaque Lady of the Woods as shown in **Image 1** on **Page 1** and **Image 5** below, center a 12" x 12" square of Sour Apple on the frit-filled texture mold with the strong swirl pattern facing away from the texture. Cover the Sour Apple with a 12" x 12" square of Standard Clear.



For an iridescent and transparent Lady as shown in **Image 3** below, center a 12" x 12" square of Iridized Clear on the frit-filled texture mold with the irid side facing the texture. Cover the Irid with a 12" x 12" square of Ming Green.



Image 3

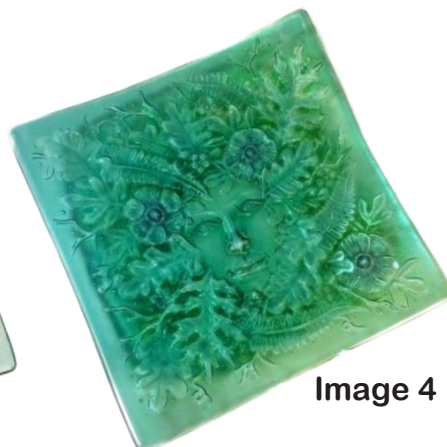


Image 4

Image 4 was created using the same frit placement but with a square of Sea Green backed with a square of Standard Clear and slumped texture-side down.



Image 5

Image 5 features the Sour Apple Lady (the same piece as in **Image 1** on **Page 1**) but viewed from the textured side with light projected through the other side.

Table 1: Full Fuse*

Seg.	Rate	Temp (°F)	Hold
1	200	1215	45
2	50	1250	30
3	250	1330	10
4	300	1465	10
5	9999	950**	90
6	100	500	05

**If using COE90, adjust to 900°F

Table 2: Slump*

Seg.	Rate	Temp (°F)	Hold
1	200	1215	45
2	50	1250	30
3	9999	950**	90
4	100	500	05

**If using COE90, adjust to 900°F

*Before firing, it's important to know your kiln. For tips on how to do that, [please click here to see our Important Firing Notes!](#)

Place the filled texture mold on short kiln posts on a level kiln shelf with the posts towards the outside edge of the mold to avoid hot spots. Fire the project to a Full Fuse using the suggested schedule in **Table 1** or your own preferred Full Fuse.

If you'd like to slump your Lady once fused and cooled, center the glass on a [GM132 XL Sushi Slump](#) that has been prepared with separator and Slump using the suggested schedule in **Table 2** or your own preferred Slumping Schedule.