

Adorable Free Standing 'Little Frosty'

Always wear a mask when spraying your mold with glass separator and when working with F1 Powder Frits. Please read the helpful tips on page 3 of this tutorial before making your project.



Materials

- [LF23G Small Snowman](#)
- Suitable Glass Separator such as ZYP
- Ear Wax Vacuum (optional)
- Powder Sifters for F1 Powder Frit (optional)
- COE9G Frits F1 Powder: Orange Opal, Black, Turq. Green Opal, Mariner Blue Opal, Mauve Opal F2 Fine: Peacock Green Opal, Chestnut Opal, Alpine Blue Opal, Turq. Blue, White Opal, F3 Medium: Light Green, White Opal & Clear.
- 18 gauge bare copper wire.
- [LBGM30](#) Lamp Base kit (optional)
- Acrylic stains or other non-fired color product to decorate LBGM30 Lamp Base (optional)



Place F1 Turq. Green in mitten cuff/scarf fringe, F1 Orange Opal in nose, F1 Black in Eyes, F2 Chestnut in buttons.



Place F2 Peacock Green in mittens and ear muffs, F2 Turq. Blue in hat fur and ball. Sift some F1 Mariner Blue into scarf knit texture.



Place F2 Alpine Blue to fill the body of the hat and at the bottom of the scarf.



Place F1 Mauve Opal into the cheeks.



Fill the Scarf with F2 Turq. Blue. Use an ear wax vacuum to clean up any frit that spilled into the snow areas.



Fill all of the snow areas with F2 White or F3 White covering the scarf and into the hat, but avoiding the tree.



Place F3 Light Green to fill the tree area.



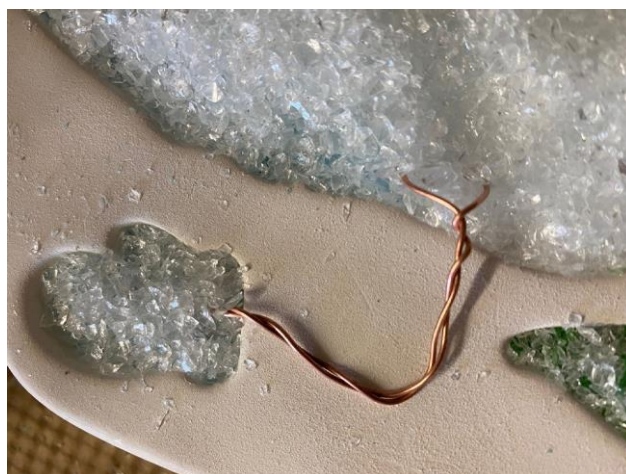
Back all of the frit with F3 Clear Frit until the mold is holding 175 grams of frit as shown above.



Bend a 4" piece of 18 gauge bare copper wire in half.



Twist the two halves of the bare copper wire together and bend the loop and the loose ends forward.



Bend the middle of the twisted wire and embed the loose ends of the wire into the glass in the mitten cavity and the loop into the glass just below the scarf in the snowman cavity.



Repeat the last step to include a twisted 18 gauge bare copper wire into the second mitten and the body of the snowman below the scarf. Make sure that the ends of both wires are sufficiently covered



Fire the project in the kiln using a full fuse schedule. A suggested schedule is provided in Table 1. After the glass is cooled, remove the snowman and clean off any residual glass separator.

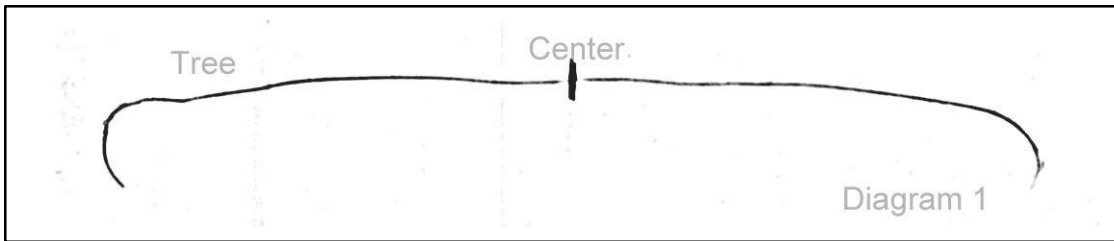


Place the fused snowman onto the GM272 Cone former that has been treated with a glass separator. Place pieces of kiln paper under the area where the mittens will touch the kiln shelf (the wire will bend during the firing and the mittens will fall as shown above). Diagram 1 on page 4 can be used to help find the center of the base of the snowman. See more information about placement of the glass on the drape on page 4.



Helpful Tips

- Weigh the mold when it is empty. This weight should be added to the desired fill weight when the mold is being filled on a scale to achieve fill weight.
- If this is your first time using your mold, give it a few good coats of ZYP/suitable glass separator. Spray the mold thoroughly in every direction. Then you only need to treat it once or twice before your next firings.
- Allow the ZYP to dry before adding frit. Always be careful not to disturb the ZYP with your fingers or a tool when you are adding frit to the mold, the Zyp can get worked up into the glass and cause sticking or too much Zyp residue in the glass.
- When your project has completed fusing and has cooled down, if the glass does not easily come out, turn the mold over on a soft surface, thump the mold on the back, and the glass should pop out safely. If your glass sticks to the mold it either means your kiln is firing too hot and the separator is failing, or you have not applied enough glass separator/missed a spot.
- Just like your oven at home before following a cooking recipe, always make sure you know your kiln before using our suggested firing schedule. For example: if your kiln fires too hot you may need to take some heat off our suggested top temp. A great way to find out about your kilns temps is to do some test tiles. Here is a flyer on this: [IMPORTANT FIRING NOTES FLYER](#)
- If you have any questions about using our molds please email us at: creativeparadiseinc@live.com



To find the center of the base of the fired snowman, you can measure across the base and mark the center or you can draw around the base of your frit casting and fold the paper matching the ends of your drawn line to find the center. Place the frit casting back on the drawn outline and mark the center of the base on the frit casting. A pencil mark on the frit casting should be easily removed or burn off during the firing. Once the casting is positioned on the mold with kiln paper on kiln shelf below where the mittens will touch, fire the project using a drape schedule. A suggested drape schedule can be found in Table 2.

Table 1 Full Fuse Firing Schedule			
Seg	Rate	Temp	Hold
1	300	1150	45
2	150	1370	20
3	350	1460	10
4	9999	950	60

Table 2 Drape Firing Schedule			
Segment	Rate	Temp	Hold
1	250	1250	10
2	9999	960	60



This image demonstrates where the frit casting should be placed on the mold. The center of the base of the snowman is lined up with the center mark on the GM272 Drape and the ball of the hat is lined up with the point of the drape. The casting is 1/8" above the end of the drape.



After the casting has been draped, it should stand on a level flat surface and can be displayed alone, or you can add the casting to the LBG30 Lamp Base Kit (by CPI). The earthenware base can be decorated with acrylic stains or spray paint. After the paint is dry, insert the clip light through the bottom of the base through the hole in the top and place the bulb into the socket. If desired, use hot glue or an epoxy to adhere the snowman to the base.

