

“One-and Done” Harvest Tray

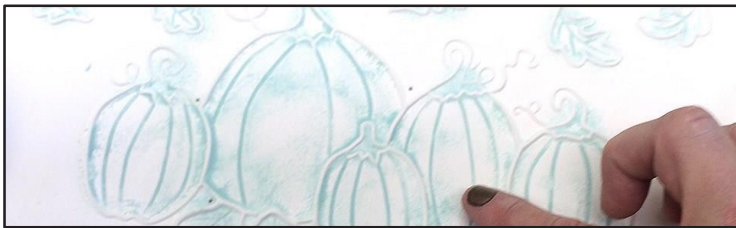
Using fusible glass, a unique firing schedule, and a mold designed for the process, you can fuse, texture, and slump all in one firing to make this festive Harvest Tray!



Materials:

- | | | |
|---|--|--|
| <ul style="list-style-type: none"> - GM168 Harvest Tray - COE96 Double Thick Clear Sheet Glass - COE96 Frits (See Right) - Suitable Glass Separator/ZYP - Frit Placement Tools - Kiln Posts | <ul style="list-style-type: none"> - F1 Powder Deep Aqua - <u>F2 Fine Frits:</u> <ul style="list-style-type: none"> - Teal Green - Medium Green - Yellow - Light Orange - Tangerine - Light Cherry Red - Light Green | <ul style="list-style-type: none"> - <u>F2 Fine Frits (con't):</u> <ul style="list-style-type: none"> - Dark Amber - Medium Amber - Pale Amber - Grape - Deep Aqua - Blue Topaz - Sapphire - Black |
|---|--|--|

Before beginning, treat your mold well with suitable glass separator and allow ample time to dry. We recommend using spray-on ZYP. Always wear a mask when applying spray-on separator and/or using powder frit.



Once the separator is dry you can begin placing frit. Start by adding F1 Deep Aqua near the veins of the pumpkins and leaves. Use your finger to gently sweep the powder into the veins, being careful to not remove or overly disturb any separator in the process.



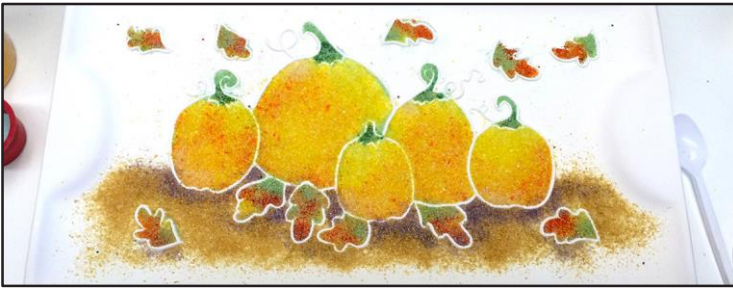
Add F2 Teal Green to the base of the pumpkin stems. Place F2 Medium Green into the remainder of the pumpkin stems as well as the stems of the leaves in the rest of the scene. An Earwax Vacuum, shown above, is a useful tool for precise frit removal.



Sprinkle F2 Yellow into the tops of the pumpkins and middle of the leaves. Add some F2 Light Orange to the bottoms of the pumpkins and middle of the leaves.



Blend a layer of F2 Tangerine over the Light Orange and Yellow in the pumpkins. Add a bit of F2 Light Cherry Red to the tips of the leaves and fill the leaves a bit more with some additional F2 Light Green.



Place some F2 Dark Amber around the base of the pumpkins. Blend some F2 Medium Amber from the Dark Amber out and around the leaves on the ground.



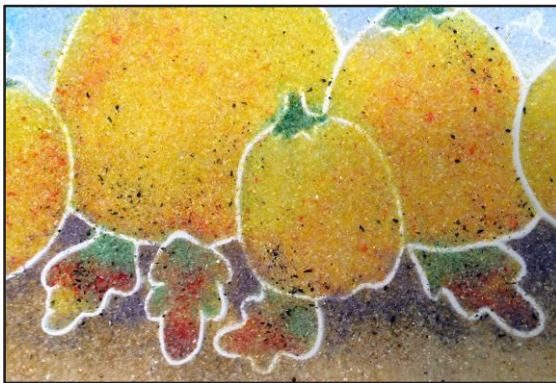
Add F2 Pale Amber down to the bottom edge of the mold and blend with the Medium Amber above it. Sprinkle a bit of F2 Grape along the top of the sky.



Blend F2 Deep Aqua over the Grape and continue down about 1.5" into the sky. Blend F2 Blue Topaz over the Deep Aqua and into the rest of the sky, leaving some empty space around the pumpkins.



Fill the void around the pumpkins with F2 Sapphire and blend upwards into the Blue Topaz in the sky.



Sprinkle a bit of F2 Black here and there on the pumpkins and ground beneath them.



Once you're happy with your frit placement, cut and clean a 7.25" x 13.25" rectangle of Double Thick Clear. Place the frit-filled mold on 1" kiln posts in the kiln and center the Clear sheet on top of it. Fire using the suggested One-and-Done schedule in [Table 1](#).

Segment	Rate	Temp (°F)	Hold
1	275	1210	30
2	50	1250	30
3	350	1330	05
4	9999	1420	05
5	9999	950**	90
6	100	500	05

**If using COE90, adjust this to 900°F

*Before firing, it's important to know your kiln. For tips on how to do that, [please click here to see our Important Firing Notes!](#)