

Rainbow Dreamcatcher

Materials:

- [DT45 Dreamcatcher Texture](#)
- [LF228 Large Feather Trio](#)
- COE96 Fine Frit in These Colors:
 - Cherry Red Transparent
 - Orange Transparent
 - Yellow Transparent
 - Lime Green Transparent
 - Sky Blue Transparent
 - Light Purple Transparent
 - Clear
- COE96 Powder Frit in Black
- String, Rope, or Wire
- Conical Sifter, Plastic Dropper, or "Drizzling Spoon"
- Suitable Glass Separator
- Epoxy
- Earwax Vacuum (optional)

Before You Begin:

- We recommend using ZYP Boron Nitride Spray
- Always allow your primer plenty of time to dry
- When adding frit, try not to disturb your primer
- If you know your kiln runs hot or cold, adjust firing schedules accordingly.
- [Click here for a more general DT45 tutorial](#)
- Email us at creativeparadiseinc@live.com with any questions



Dreamcatcher:



Conical Sifter



Drizzling Spoon

Suggested tools for precise frit placement are a Conical Sifter, a Plastic Dropper with a cut tip and bulb, or a Baker's Drizzling Spoon.



Cut Plastic Dropper



After thoroughly priming the convex side (where the lines are pressed in) of the DT45 mold, use your preferred frit placement tool and fill the outer ring with the Fine Cherry Red Frit.

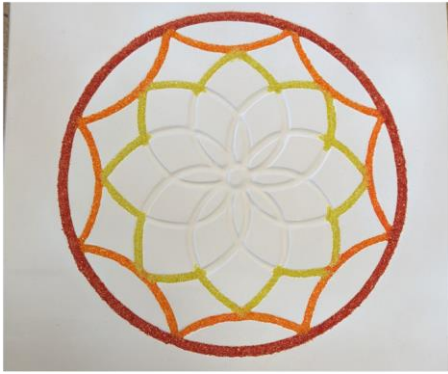


Since this casting will not be backed, make sure there is enough frit. Your lines should be full, but not overflowing.

A small bit of red should leak into the next section of the mold to blend with the next color.



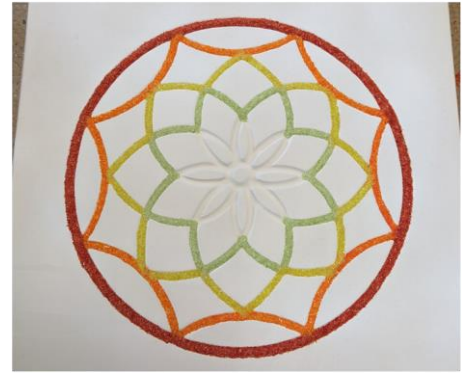
Use the Fine Orange Transparent Frit to fill the next level of the design, again allowing some to leak into the next section for color blending.



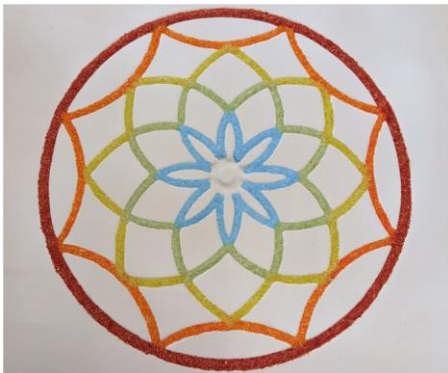
Fill the next level of the design with the Fine Yellow Transparent Frit, still allowing some to bleed over into the next level.



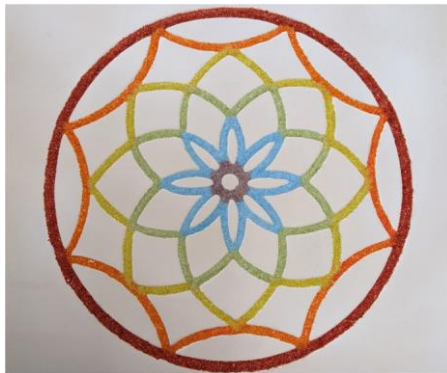
At the points where the colors meet, the frit should overlap slightly to help with the gradual transition between colors.



For the next level, use the Fine Lime Green Frit, still allowing the slight bleed into the next level.



Use the Fine Sky Blue Transparent Frit for this level, but do not allow any to bleed into the inner ring of the design.



Fill the center ring with the Fine Light Purple Frit, allowing it to overlap slightly where it touches the Sky Blue.

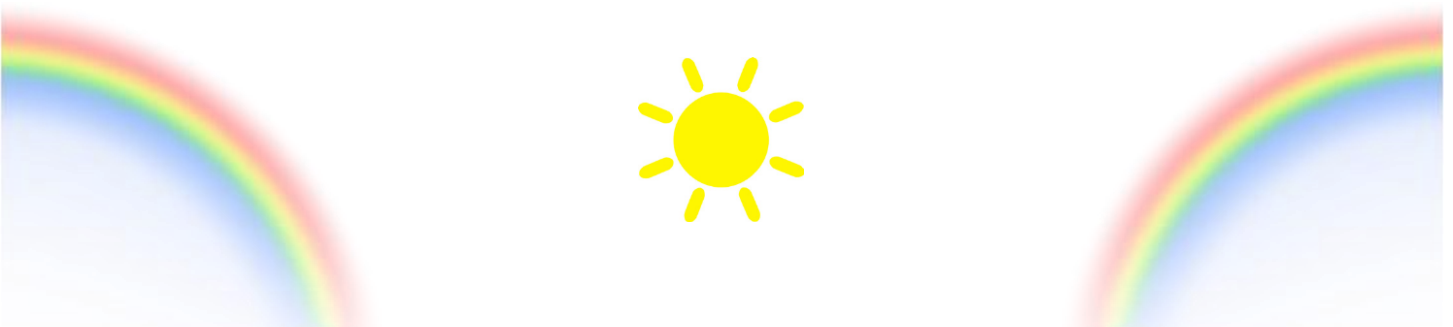


Gently place the **filled** mold into the **kiln**, and fire according to the schedule in Table 1 or your favorite Tack Fire Schedule for your kiln.

Table 1:

Segment	Rate	Temperature	Hold
1	350	1150	15
2	375	1410	0
3	9999	950**	60

**If you use COE90 for this project instead, change the temperature in Segment 3 to 900.



Feathers:



After thoroughly priming the mold, use a conical sifter to fill the middle line of the feathers with the Powder Black Frit.

Lessen the amount of frit placed towards the tip of the feather for a more natural look.



Use the Fine Cherry Red Frit and your frit placement tool of choice to gently fill the base of the feathers without disturbing the Powder Black.

Make sure there is frit in the smaller points of "down" at the base of the feather.



Keep the edge of your frit in a "V" shape centered on the middle line. This follows the shape of the feather for a more natural appearance.

Also, as with the Dreamcatcher, allow for a little bleed over for color blending.



Proceed to the Fine Transparent Orange Frit for the next segment.

Proportions here were estimated. For more precise stripes, measure the length of each feather and divide by 6.



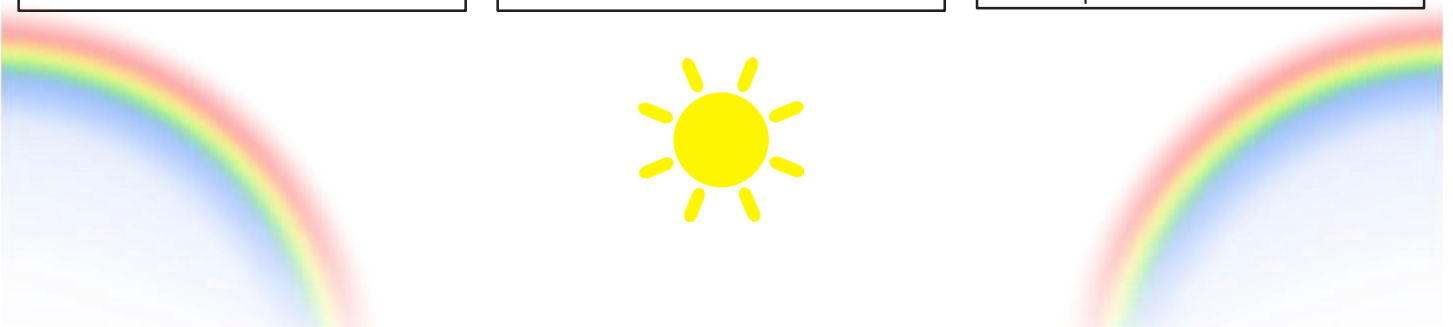
Use the Fine Transparent Yellow Frit for the next level, maintaining both the "V" shape and the slight bleed.

Make sure the frit is all the way to the sides of the mold to fully capture the shape of the feather.



The next level is the Fine Lime Green Frit. As with the other steps, keep the "V" shape and bleed, and make sure the frit is to the edges.

You can use a dry brush or small vacuum to help with the "V" shape if needed.





Using the same methods as the previous segments, fill the next portion with the Fine Sky Blue Transparent Frit.



Fill the remaining level with the Fine Light Purple frit, making sure the frit spreads all the way to the tip of each feather and to each side.



Back the colored frit with Fine Clear Frit until roughly half to three-quarters of the mold is filled. If using 1/2 weights, fill until roughly 100g*.

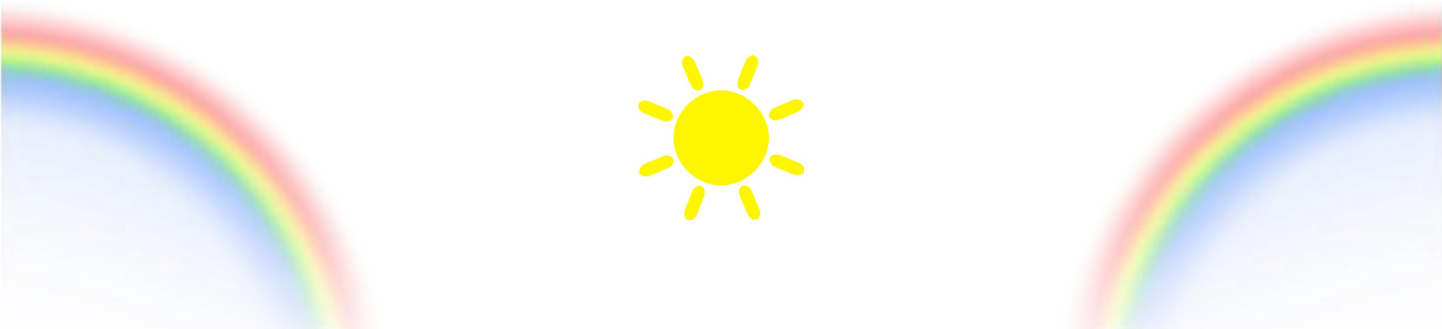


Fire according to the schedule in Table 2.

Segment	Rate	Temperature	Hold
1	275	1150	45
2	50	1280	30
3	300	1425	10
4	9999	950**	90

**If you use COE90 for this project instead, change the temperature in Segment 4 to 900.

*Note that because the Dreamcatcher portion of this piece is not backed, it is important that the Feathers aren't too heavy. If your piece has a backed Dreamcatcher, you can fill the Feather mold completely and take it to a full fuse.



Finishing Touches:



Figure out how low you would like the feathers to hang. In the example, the middle Feather is about 6" below the rim of the Dreamcatcher, and the outer Feathers are about 7".

Add on two inches in either direction for wrapping, resulting in two strings of 11", and one of 10".



To wrap the Feathers, start at the notch in the base where the "down" meets the body of the feather. Wrap several loops around the notch.

For extra security, seal the ending point of your wraps with epoxy.



To wrap the Dreamcatcher, take the other end of the wire and loop it several times at the point where the colors meet. Take any extra and wrap it around the wire itself.

If you would like, you can also add a loop at the top point for hanging.



And with that, your piece is done! You can add additional strings to add beads or feathers if desired.

It looks great hanging anywhere, but particularly when it catches the light from a window.

Featured Molds:



[DT45 Dreamcatcher Texture](#)
11" x 11"



[LF228 Large Feather Trio](#)
9.5" x 7.5"