



Example 1:

Dimples and Daubs

Art Glass Supplies

Create Inspire Fuse

- Materials:**
- GM280 Dimple Rim Slump
 - GM135 Dot Coaster Dam
 - LF045 Mini Disks
 - LF148 Round Disks
 - Suitable Glass Separator/ZYP
 - Frit Placement Tools
 - Glass Cutting Supplies

- Suggested Glass:**
- Sheet Glass:
 - Standard Thickness Clear
 - Two Complimentary Colors
 - Frits (Fine Grain):
 - Desired Complimentary Colors

Treat all molds thoroughly with suitable glass separator before beginning. We recommend using spray-on ZYP. **Always wear a mask when using spray-on separator or working with powder frits.**

Seeing Spots:

The cavities of the GM135 Dot Coaster, LF045 Mini Disks, and LF148 Round Disks were used to create a variety of dot and daub sizes for this project. Fill the circles of each mold with fine grain frit of your chosen complimentary colors. Orange Opal, Amazon Green Opal, and Turquoise Blue Opal were used in the images shown here.

The more frit used to fill a cavity, the larger the resulting dot will be. For a bit of additional visual interest, mix colors together in the same cavity like those shown in the top row of LF148 in **Images 1 & 4**.

Once all the cavities are filled with the desired amount of frit, transfer the molds to a level shelf in the kiln and fire using the suggested schedule in **Table I** below or your own preferred Full Fuse.

Seg.	Rate	Temp (°F)	Hold
1	300	1150	45
2	150	1300	20
3	400	1460	10
4	9999	950**	60

**If using COE90, adjust this to 900°F



Image 1:
(LF148 Pre-Fire)



Image 2:
(GM135 Pre-Fire)



Image 3:
(LF045 Pre-Fire)



Image 4:
(LF148 Post-Fire)



Image 5:
(GM135 Post-Fire)



Image 6:
(LF045 Post-Fire)

There are two ways to approach making the sheet glass blank for this project. **Method One** involves drawing the line directly onto the sheet glass without cutting it first and results in a single blank, while **Method Two** involves cutting each color into a circle first before drawing the line, resulting in two oppositely colored blanks. Choose whichever method works best for your intended project!

Method 1: Single Blank

Colors Used: Orange Trans., Deep Aqua Trans., and Standard Clear

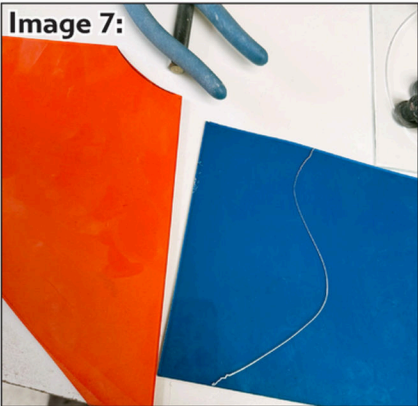


Image 7: Begin by cutting a 6" diameter circle of Standard Clear and setting it aside. Draw a loose wave shape on one of the colors of glass, or refer to **Pattern I** on **Page 5**. Once the line is drawn, score then run the score along the drawn line.



Image 8: Use the cut edge of the first color to trace an opposite line onto the second. Score then run the score along the drawn line.



Image 9: Once both sheets are cut, check to make sure the edges align. It is alright if there are small gaps, as the sheets will be placed atop the Clear and the seam covered with dots, but do make sure the shapes align and fit together.

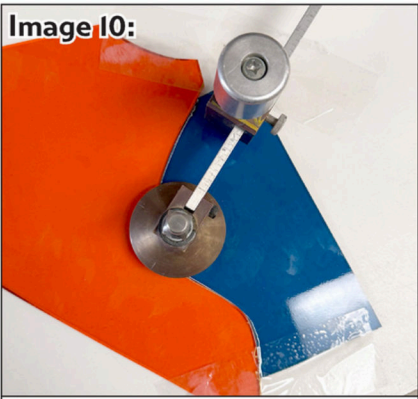


Image 10: Use bits of tape to hold the sheets together. Place a Circle Cutter set to cut a 6" circle along the seam where the colors meet. Hold the base of the Circle Cutter down firmly and score one color at a time.

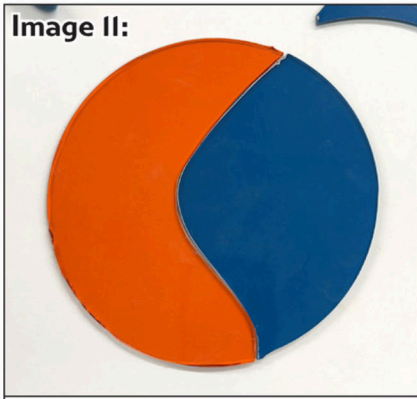


Image 11: Clean the edges of all the cut pieces, and assemble the two colored halves together on top of the 6" Clear circle.

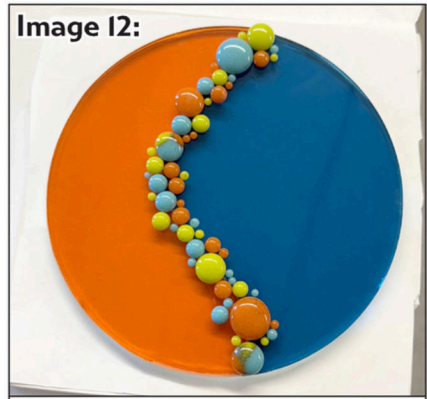


Image 12: Place the assembled base atop a suitably sized sheet of Kiln Shelf Paper on either a level shelf in the kiln or a removable shelf or ceramic tile, and add the pre-fused dots as desired along the seam.

Fire using the suggested schedule in **Table 2** or your own preferred Tack Fire.

Seg.	Rate	Temp (°F)	Hold
1	350	1150	45
2	375	1375	05
3	9999	950**	90

Method 2: Double Blank

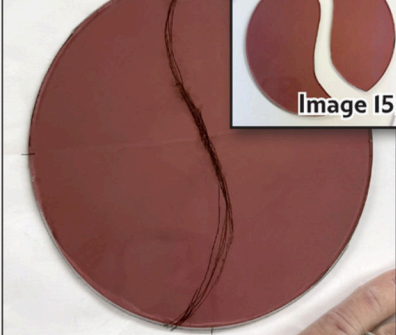
Colors Used: Light Green Trans., Pale Purple Trans., and Standard Clear

Image 13:



Begin by cutting a 6" diameter circle of Standard Clear and setting it aside. Draw a loose wave shape on one of the colors of glass, then score and run the score along the drawn line.

Image 14:



You can also use **Pattern 2** on **Page 6** for the line shape shown above. Print the pattern at "Actual Size" and place it under the glass to trace.

Once the line is drawn, score and cut along it (**Image 15**).

Image 16:



Use the cut edge of the first color to trace an opposite line onto the second. Score then run the score along the drawn line.

NOTE: The opaque frit colors used for the dots of this dish were Pastel Green, Lilac, Mauve, and Cherry Blossom. The Mauve and Cherry Blossom were pulled from a reserve amount of older frits in our warehouse and are discontinued, but any similar purples or pinks will work.



Image 17:

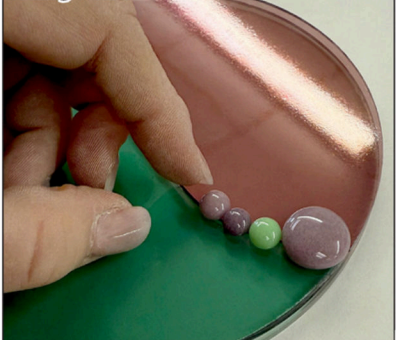
Image 18:



This method results in four separate pieces (**Image 15**) that combine to form two opposite circles (**Image 16**).

Assemble two of the pieces in a circle atop the previously cut circle of Clear. Transfer them onto a suitably sized sheet of Kiln Shelf Paper on a level kiln shelf or removable shelf or ceramic tile.

Image 19:



Add the previously fused dots as desired along the seam. Fire using the suggested schedule in **Table 2** or your own preferred Tack Fire.

Table 2: Tack Fire*

Seg.	Rate	Temp (°F)	Hold
1	350	1150	45
2	375	1375	05
3	9999	950**	90

**If using COE90, adjust this to 900°F

Slumping:

Once the blank has fused and cooled, remove it from the kiln.

Center the blank atop the GM280 Slump treated well with separator and place it on a level shelf in the kiln. Fire using the suggested "Hard Slump" schedule in **Table 3**, adjusted as needed for your own kiln.

This schedule holds the glass at a hotter temperature in **Segment 2**, allowing the dimpled texture of the mold to fully emboss the glass.

Image 20:



Example 2:

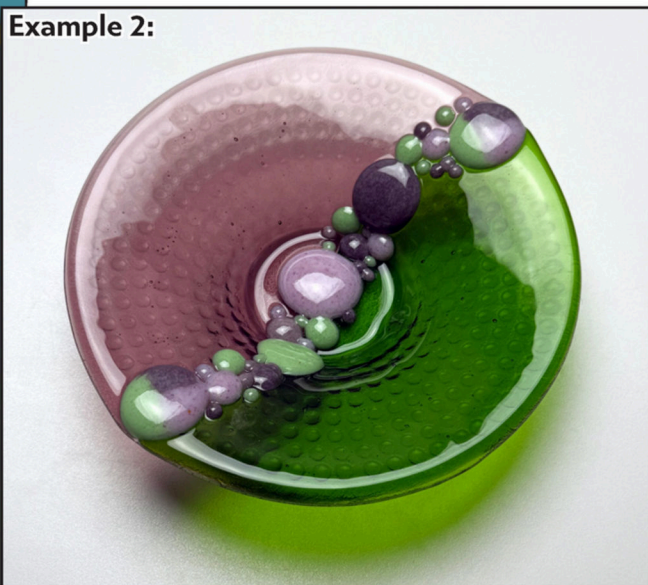
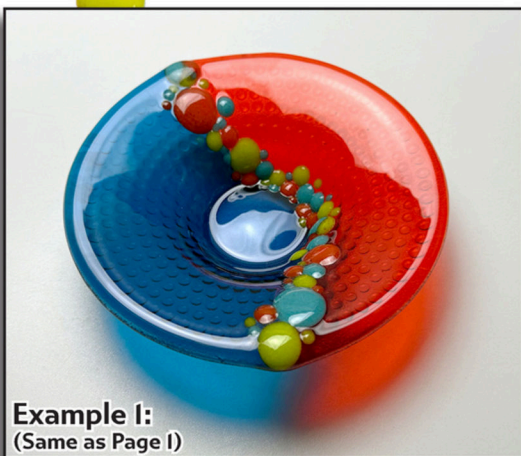


Table 3: Hard Slump*

Seg.	Rate	Temp (°F)	Hold
1	275	1250	45
2	150	1300	15
3	9999	950**	90

**If using COE90, adjust this to 900°F



Example 1:
(Same as Page 1)

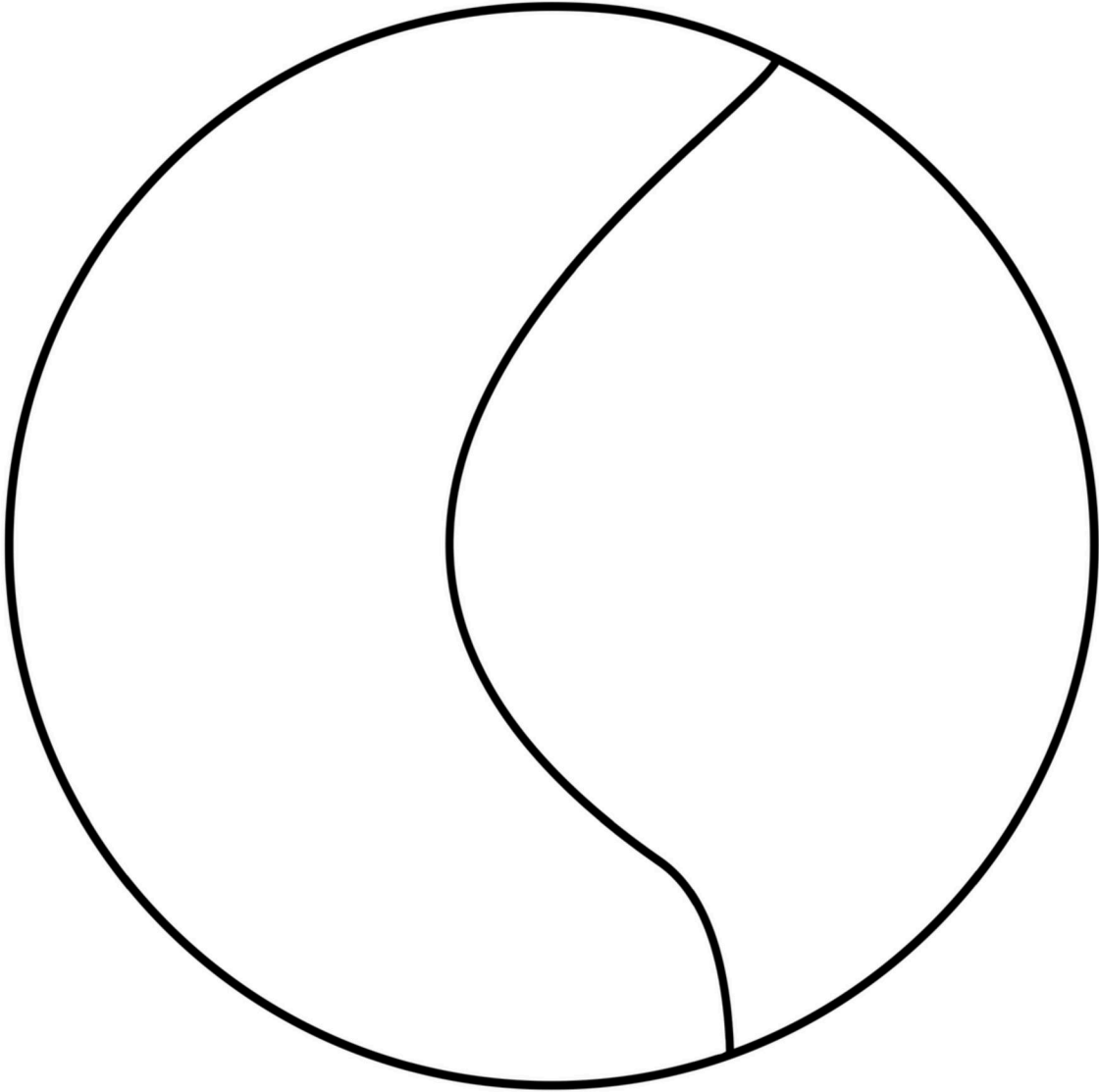
Featured Mold:



GM280 Dimple Rim Slump

Mold: 6.25" Dia. x 2.25" T
Slump Depth: 0.75" Deep

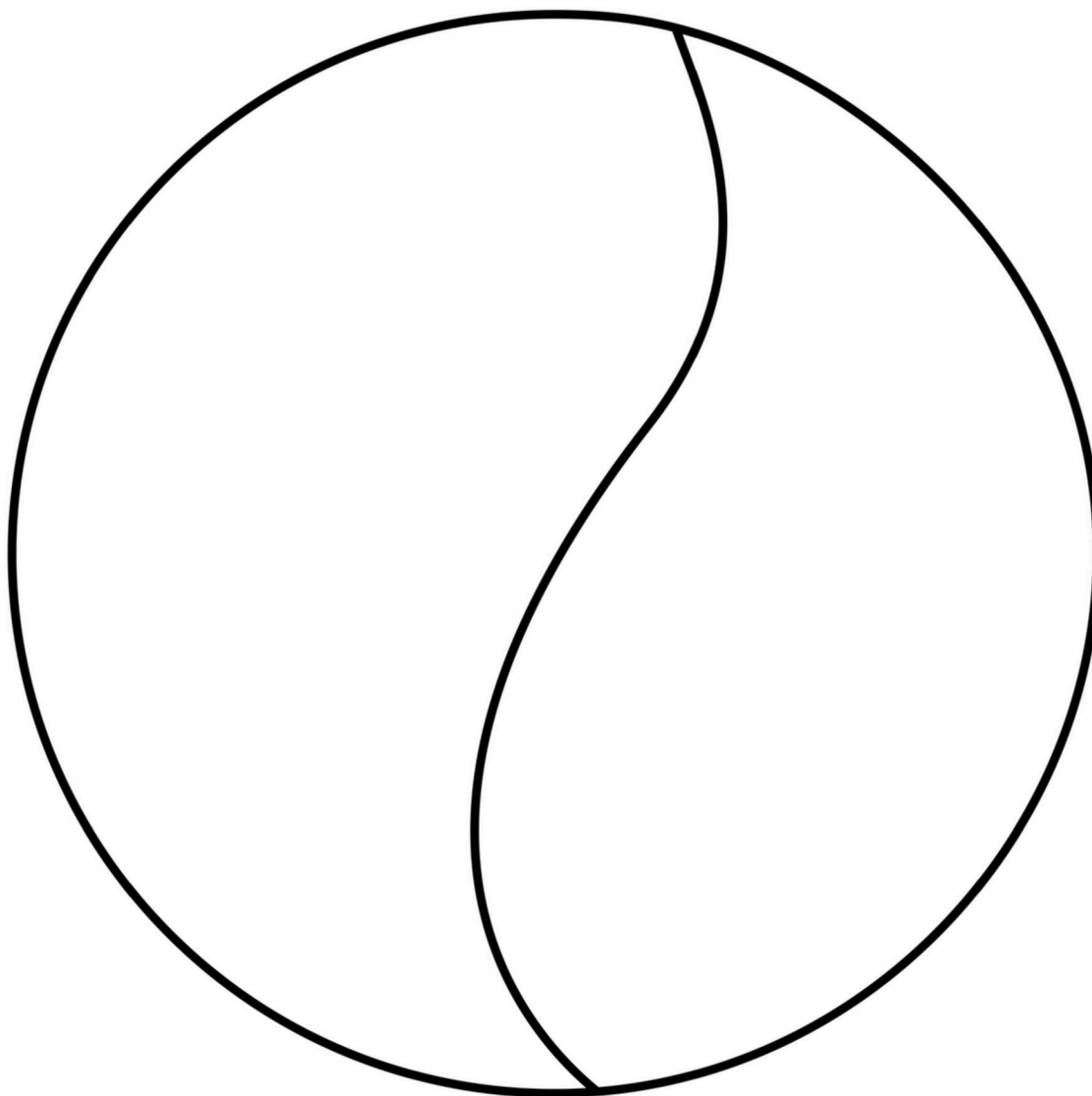
Pattern 1- Dots Around Middle:
(Example 1, Orange and Blue)



**When printing, make
sure to print at "Actual
Size" or 100%!**

For more information, tutorials,
and molds, visit our website:

*Pattern 2- Dots Through Middle:
(Example 2, Purple and Green)*



****When printing, make
sure to print at "Actual
Size" or 100%!****

For more information, tutorials,
and molds, visit our website: