

Tips and Tricks:

Etched Round Ornaments



Here are some tips on using our etched round ornaments.

Tip 1: The etched Luminescent coating must be fired against a fiber paper ([ThinFire](#), [Papyros](#), [Fiberfrax](#)). To ensure the coating survives the firing, it's essential to protect the coating by firing on a fiber product.

Tip 2: Use the ornament casting mold. We've made these etched round ornaments to fit into the [Christmas Ornament Casting Mold \(SKU: 167115, LF24\)](#). Place the round etched ornament into the mold face down and fill the rest of the cavity with sheet glass or frit. This mold takes 70 grams of glass. When using Luminescent glass, be sure to use a fiber paper against the bottom of the mold.



Here are some fun ideas to try when using the casting mold:

- Use some dichroic glass for the top of the ornament.
- Fuse some [high temp wire](#) to hang your ornament.



- Use 2 etched ornaments back to back, one face up and one face down. In this example, we used 2 etched Luminescent Round Floral Ornaments and sifted a layer of green transparent powder frit between the two ornaments. Since we used Luminescent glass, we placed a piece of [ThinFire](#) in the bottom of the mold as well as a piece on top of the etched circle facing up.



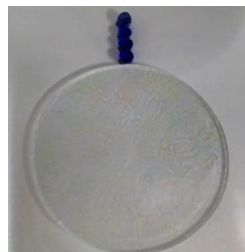
Tip 3: Use the etched ornament as a centerpiece of a dish. These ornaments look great as a focal point to a dish.

Here are a few ways we used these ornaments in a dish:

- Use [murrini](#) or [twisted cane](#) for your ornament's chain to add some fun flair to your project.



- For a matte finish on your finished dish design your blank face down on fiber paper. Then you will turn over to slump. When using Luminescent glass be sure the coating is against the paper on the kilns shelf.



- For a glossy finish, fire an Etched Iridescent Ornament on top of your blank. Keep the ornament & embellishments away from the edges of the blank to avoid distorting the shape of your blank with the additional glass.



- For a glossy finish with a matte finish on the ornament fire an Etched Luminescent Ornament on top covered with a piece of fiber paper.



- Luminescent glass may be slumped face up without fiber paper over it once it has been fully fused. Be sure to use the lowest temperature possible to ensure the coating doesn't burn off. We do not go over 1250 degrees F.

Tip 4: Hanging your round ornament. Hang your creation! It's an ornament after all!

- Fuse a ring of [high temp wire](#) in your ornament.
- Glue a [pendant bail](#) to the back of your ornament.
- Drill a hole in your ornament using a [core drill bit](#).



Tip 5: Using Iridescent glass. Since Iridescent glass can be fired without fiber paper it will become glossy at full fusing temperatures.

- Use Clear Iridescent glass with a dark transparent glass as your base to help the iridescent coating stand out. These are some of our favorites: [1122 Red Transparent](#), [1114 Deep Royal Blue](#), [1145 Kelley Green](#), [1228 Amethyst](#). To achieve a more subtle look, use lighter transparent colors.
- We love using Silver Iridescent and Gold Iridescent. Rainbow Iridescent is great too but, since the color varies across the sheet, we've found the patterns tend to stand out better with a solid color irid.