

Seashore Tray Tutorial

CreativeParadise Inc.

Create a gorgeous seashore tray featuring a warm blend of oceanic colors using the frit slurry technique topped off with frit cast sea shells, coral, star fish and sea horses.



Materials You Will Need

- Creative Paradise Molds: LF150 Shells and Coral, LF149 Starfish and Seahorse and GM97 Handle Tray.
- ZYP Glass Separator Spray
- COE96 Sheet Glass: Double Thick Clear 6.75" x 12.75".
- COE96 Assortment of F1, F2 and F3 Frits for Frit Slurry and for frit casting molds. See below for colors.
- Frit Slurry materials: plastic spoon, skewer or knife, paper cups, water and spray bottle, paper towels.
- Safety Glasses, Respirator mask to wear when using F1 Powder Frits.

Make sure all the molds you use are treated prior with a suitable glass separator spray (ZYP or Kin Wash)

Frit Slurry:

How to make the frit slurry mix: Wear a respirator mask to avoid inhalation of frit powder. Put the desired color of powder frit you want into a paper cup (or other mixing container). Use a spray bottle with water to spritz enough water into the container until the powdered frit is completely saturated with water and there is a bit of water residing over the top. Mix the powder frit and water with a spoon until you have a pancake batter like consistency. This is how you will make all of the frit slurry's. Do not mix different color frits together in the same cup- you will need a clean or separate cup for each water and frit mix.

Fill four small plastic containers or dixie cups with:

2 Tbs of F1 medium Amber

4 Tbs of F1 Blue Topaz

3 Tbs of F1 Sea Green

3 Tbs of F1 Pale Blue

Create slurries of the powders using water as instructed above.

Cut a 6.75" x 12.75" rectangle out of double thick clear glass. Wipe the glass clean of any smudges or stains. You will be applying the frit slurries onto this glass as seen in image A, B and C.

Place the Medium Amber slurry in two opposite corners at an angle.

Place the Blue Topaz, Sea Green and Pale Blue slurries in alternating diagonal stripes between the Medium Amber areas (image A). Use a plastic knife to gently drag and blend one slurry color into the next this will help to create unique ripples and color movements when the glass fuses (image B). Shake the glass to help the slurry smooth out and continue to blend. Spritz the slurries on the glass with water to help blend the slurries, you can also gently vibrate the glass from side to side (image C). Set the slurry aside to let it dry. Next begin working on the LF149 and LF150 frit castings. After the frit castings are fired and cleaned you will arrange them on the unfired frit slurry which then will be slumped on the GM79 Handle Tray.



Image A. Place the frit slurries onto the glass.



Image B. Use a plastic knife to blend the slurries.



Image C. Spritz the slurries with water or gently vibrate the glass from side to side to create a smooth and even blend of frit colors.

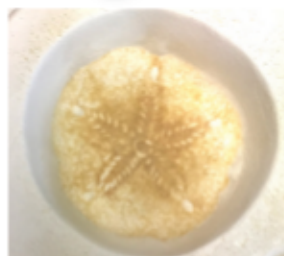
LF150 Shells and Coral Frit Casting Mold



Sand Dollar



Sift F1 Chestnut in the details.



Sift F1 Medium Amber over the Chestnut.



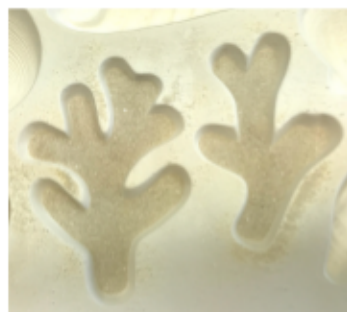
Add F2 Khaki until the cavity holds 20 grams of frit.



Corral



Sift F1 Medium Amber into low details.



Add F2 Khaki until smaller cavity holds 19 grams and larger holds 25 grams total of frit.

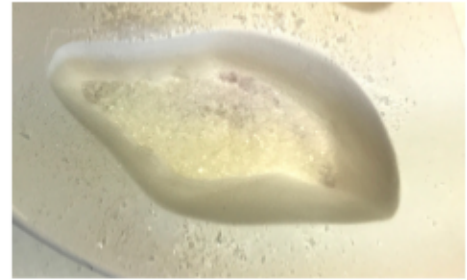
Creative Paradise Inc.



Shell one



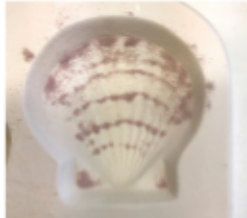
Sift F1 Light Purple into low details and along ridge add a bit of F2 Champagne to the center.



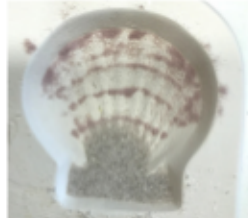
Fill with F2 White (not pictured) until the cavity holds a total of 8 grams of frit.



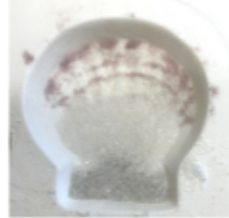
Shell 2



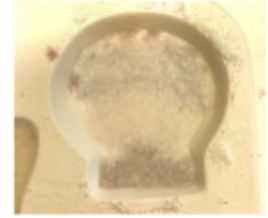
Place F1 Light Purple in curved horizontal bands in the cavity.



Place F2 Stone in the bottom portion of the cavity.



Place F2 Champagne above the Stone in the cavity.



Cover the Champagne and the remainder of the bottom of the shell with F2 White. Fill the cavity with F2 Khaki until the cavity holds a total of 25 grams of frit (not pictured).



Shell 3



Sift F1 Light Purple in the low areas of the cavity.



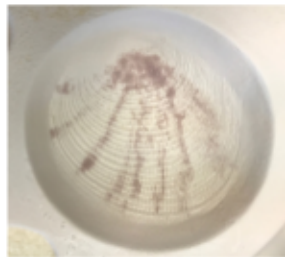
Place some F2 Mauve over the Light Purple in the cavity.



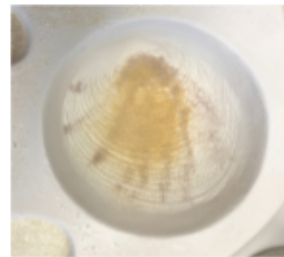
Fill the mold with F2 Champagne until the cavity holds 15 grams of frit.



Shell 4



Place F1 Light Purple in thin vertical curved lines from radiating from the bottom of the shell out.



Sift a bit of F1 Medium Amber frit in the center of the shell.



Place a bit of F2 Stone in the center over the Medium Amber. Fill the cavity with F2 Champagne until the cavity holds 28 grams of frit (not pictured).

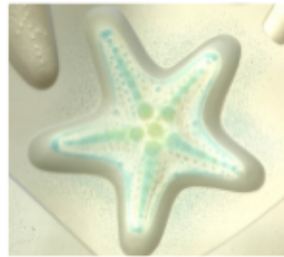
LF149 Starfish and Seahorse Frit Casting Mold



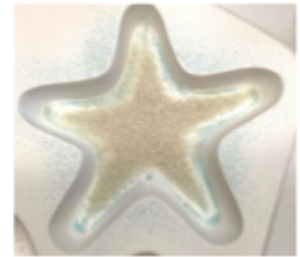
Star Fish 1



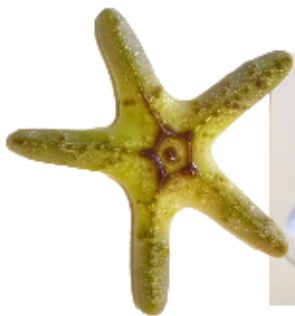
Place F1 Lemon grass in the low recessed dots in the cavity.



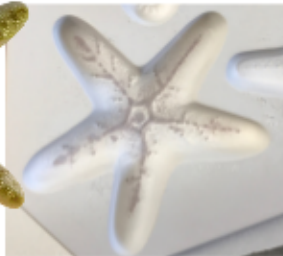
Sift F1 Blue Topaz over the Lemon grass and into some of the smaller dots in the cavity. You can use your finger to gently move the powdered frit into the dots.



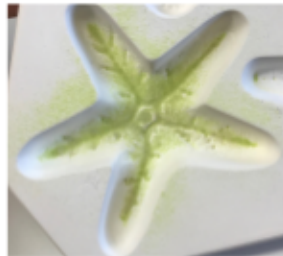
Place F2 Khaki in the low area of the cavity. Fill the cavity with F2 Almond until the cavity holds 37 grams of frit (not pictured).



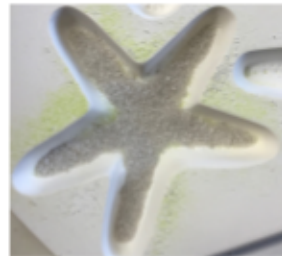
Starfish 2



Place f1 Lilac in the low recessed areas



Sift F1 Moss Green in the bottom of the cavity



Place F2 Stone over the Moss Green in the bottom of the cavity



Fill the mold with F2 Almond until the cavity holds 41 grams of frit.



Sea Horses, 1 and 2.



Sift F1 Moss Green in the fringes of the belly and neck and bottom of the tail.



Sift F1 Blue Topaz in the face, fin and along the back. Place F1 Orange Opal in the recesses of the spine and belly and cheek.



Sift a light coat of F1 Crystal Opal to cover the entire bottom of the cavity.



Add F2 Light Blue in the fin, belly lowest part of the tail and along the face and fringes on the neck.



Fill the mold with F2 Ming Green until the large Seahorse has 21 grams of frit and the small has 17 grams of frit.

Fire the LF150 and LF149 molds using the schedule in table 1. When they are finished fusing and have cooled, gently take the frit castings out of the molds and scrub them clean. Arrange the shells, sea horses, coral and starfish on the dry frit slurry as seen below in image D. Place the project on to the GM97 Handle tray and then put the project in the kiln as seen below in image E. Fire the project using the schedule in table 2.



Image D.



Image E.

The fill weights given for the frit castings in this tutorial are less than the fill weights that would be needed to fill the cavities at a full fuse. This was by design to create thinner frit castings. The goal is to fire the frit to the point where the frit is fused and molded on the design side but not full fused where the lack of volume will cause the frit to pull in and not fill the bottom of the mold. The back side of the frit castings may have a bumpy texture but that texture will not cause any problems going forward.

Table 1.* Fuse Schedule			
Segment	Rate	Temp	Hold
1	275	1215	30
2	50	1250	30
3	350	1400	10
4	9999	950	60

*Before firing please refer to our [important firing notes by clicking here.](http://www.creativeparadiseglass.com)

Table 2* Slump/tack Schedule			
Segment	Rate	Temp	Hold
1	275	400	20
2	275	1215	60
3	50	1260	60
4	350	1400	03
5	9999	950	180
6	50	825	10
7	100	500	05

For more tutorials, molds and info visit www.creativeparadiseglass.com

Creative Paradise Inc.