

Image 1

# Tree of Life Mantle Lamp

*Creative Paradise Inc.*

## Materials Needed:

Creative Paradise products:  
[GX13 7" Tree of Life Texture Mold](#)  
[GM30 SM Cylinder Drape](#)  
[LBGM30 Lamp Base Kit for GM30](#)  
 COE 96 Glass-  
 6.5" x 6.5" Teal Green Transparent  
 6.5" x 6.5" Iridized Bronze Transparent  
 Glass separator (Zyp preferred)  
 Acrylic Stains (Creative Paradise colors  
 used in sample photographed = 924 Teal  
 Blue, 935 Medium Blue, 973 Copper Penny)  
 water, round sponge, pallet.



Image 2



Image 3

Begin by treating the GX13 Tree of Life Texture mold and the GM30 Cylinder mold with a quality glass separator. Place the mold in a kiln on a kiln shelf. Place a 6.5" x 6.5" square of transparent Teal Green centered on the texture mold in the kiln. Place a 6.5" x 6.5" square of Iridized Transparent Bronze with the iridized surface up on the Teal Green on the mold (image 2). Fire the glass on the mold in the kiln using the firing schedule given in Table 1.



Image 4

Allow the kiln to cool naturally. When you open the kiln the surface of the fused glass will be slightly textural on top (image 3) and the tree of life texture will be embossed on the bottom of the glass (image 4). If any glass separator is on the glass, use soap and water and a scrub brush to remove the glass separator.

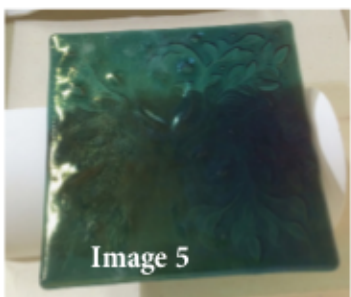


Image 5

Place the GM30 cylinder mold on a level kiln shelf. Place the fused glass on the mold with the iridized surface up and the tree of life texture down facing the mold with the tree lined up length wise in the center of the mold (image 5). Fire the project in a kiln using the firing schedule found in Table 2.

Allow the kiln to cool naturally. Remove the draped glass from the mold (image 6). The GM30 Cylinder Mold is designed to form glass to fit the fired earthenware lamp base which come in a kit with a 6" cord set with metal-lined snap-in socket and 25 w candelabra bulb. The ceramic base can be glazed with a cone 04 glaze or painted with and acrylic stain.

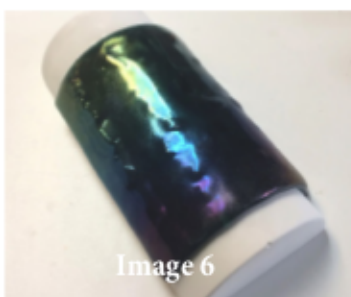


Image 6



Image 7



Image 8



Image 9

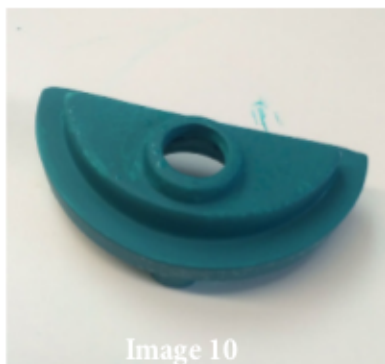


Image 10

The base in the sample photographed (image 16) was painted with Creative Paradise acrylic stains to create a faux painted copper finish.

To finish the ceramic lamp base as photographed in Image 12 and 16: Use water to moisten a round synthetic sponge. Dip the sponge into a bit of the 924 Teal Green and base coat the entire surface including the bottom of the ceramic lamp base using the sponge (image 8, 9 & 10).

Clean the sponge with water and dip the sponge into a bit of 973 Copper Penny. Dab the Copper Penny here and there over the Teal Green base coat (image 11). Allow the Copper Penny to dry.



Image 11

Clean the sponge with water and dip the sponge into a bit of 925 Medium Blue. Dab the Medium Blue here and there over the Teal Green and Copper Penny areas (image 12). Allow the paint to dry completely.

The fused glass cylinder will rest on the ledge of the lamp base. To secure the glass to the base, apply a bit of E6000 glue or other adhesive beneath the glass on the ledge (image 13).



Image 12

Insert the clip light through the bottom of the lamp base until the wings of the clip light are braced securely in the hole and the top of the socket is level with the top of the socket hole in the base. Screw the candelabra bulb into the socket (image 14).

Place the lamp on a secure flat surface, plug the cord in and turn the lamp on. Enjoy!!

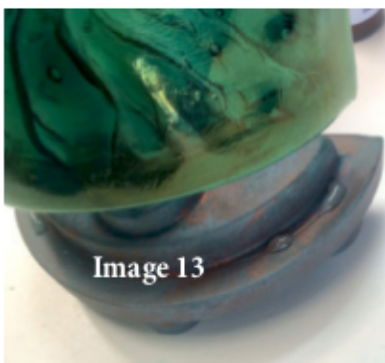


Image 13



Image 14



Image 15

*Creative Paradise Inc.*

Table 1			
Seg-ment	Rate	Temp	Hold
1	275	1210	30
2	50	1250	20
3	275	1330	5
4	350	1460*	05
5	9999	950	60
6	100	825	05
7	100	500	5

\*See "firing notes" to determine if this temperature is correct for your kiln

Table 2			
Seg-ment	Rate	Temp	Hold
1	275	1210	20
2	50	1240	05
5	9999	950	60
6	100	825	05
7	100	500	0



Image 16